



Bolt action rifles

IMPACT[®]

PLUS

The weapon shown is the Impact Plus Affût finished by L'Atelier Verney-Carron



Bavarian cheek rest for accurate and relaxed aim.



SPECIFICATIONS

TOTAL LENGTH : 105 cm (Battue), 113 cm (Affût), 114 cm (Take Down)

WEIGHT : 3 kg (Battue), 3,150 kg (Affût), 3,350 kg (Take Down)

BARREL : high precision rifled, 52cm, floating flottant

TRIGGER : adjustable initial weight, optional set trigger (as standard on Take-Down)

LOCKING : 3 pins directly into barrel

WOOD : selected sanded and oiled walnut, curved, Bavarian cheek rest, flared end

RECEIVER : in Ergal

FINISHES : black, anti-glare

EJECTION : 2 piston ejectors

SIGHTING SYSTEM : Battue rib (Battue) or sight (Affût and Take Down), adjustable fiber optic front sight interchangeable with the **Optimum** INFAILLIBLE

MAGAZINE : removable metal 3 shots magazine

SLING SWIVELS : detachable provided

CALIBERS : 7x64, 300 Win Mag, 9,3x62, 270 WSM, 7mm Rem Mag, (30-06 : export)

OPTICS : threaded holes in the receiver with steel insert



OPTIONS

- **Optimum** sights and mounts
- **Optimum** INFAILLIBLE
- Fluted barrel available to order with supplement for the Affût model.

YOU WILL LIKE

BOLT RELEASE SAFETY BUTTON
for totally safe loading and unloading.

LOADING INDICATOR
showing if a cartridge is inserted in the breech.



COCKING INDICATOR

SAFETY
central and good size safety button which locks the trigger, the trigger bar, the firing pin and bolt.

5 YEARS WARRANTY

www.verney-carron.com

R I F L E D G U N S

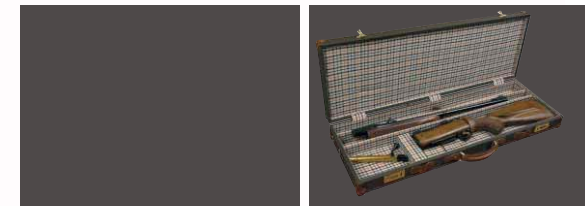


Bolt action rifles
IMPACT®
PLUS



IMPACT PLUS® TAKE DOWN (demountable)

60cm barrel. Total length 114cm
 demountable. Weight : 3,350kg
 Dismantled length : "barrel/forend" assembly = 62,5cm
 "stock/receiver" assembly = 56,5cm
 Trigger : adjustable trigger pull, factory fitted set trigger



IMPACT PLUS® BATTUE

52cm barrel. Total length 105cm
 Trigger : adjustable trigger pull, optional set trigger



OPTION

Fluted barrel with supplement



IMPACT PLUS® AFFÛT

60cm barrel. Total length 113cm
 Trigger : adjustable trigger pull, optional set trigger

Caliber	7x64	300 Win.Mag	9,3x62	270 WSM	7mm Rem.Mag	30-06
Magazine	3 round		3 round	2 round	3 round	
Take Down	55TDA764	55TDA300	-	55TDA270WSM	55TDA7RM	55TDA3006
Battue model	55BA764	55BA300	55BA9362	55BA270WSM	55BA7RM	55BA3006
Affût model	55AF764	55AF300	-	55AF270WSM	55AF7RM	55AF3006

These rifles are tested and adjusted using the ammunitions indicated on the magazine.

R I F L E D G U N S